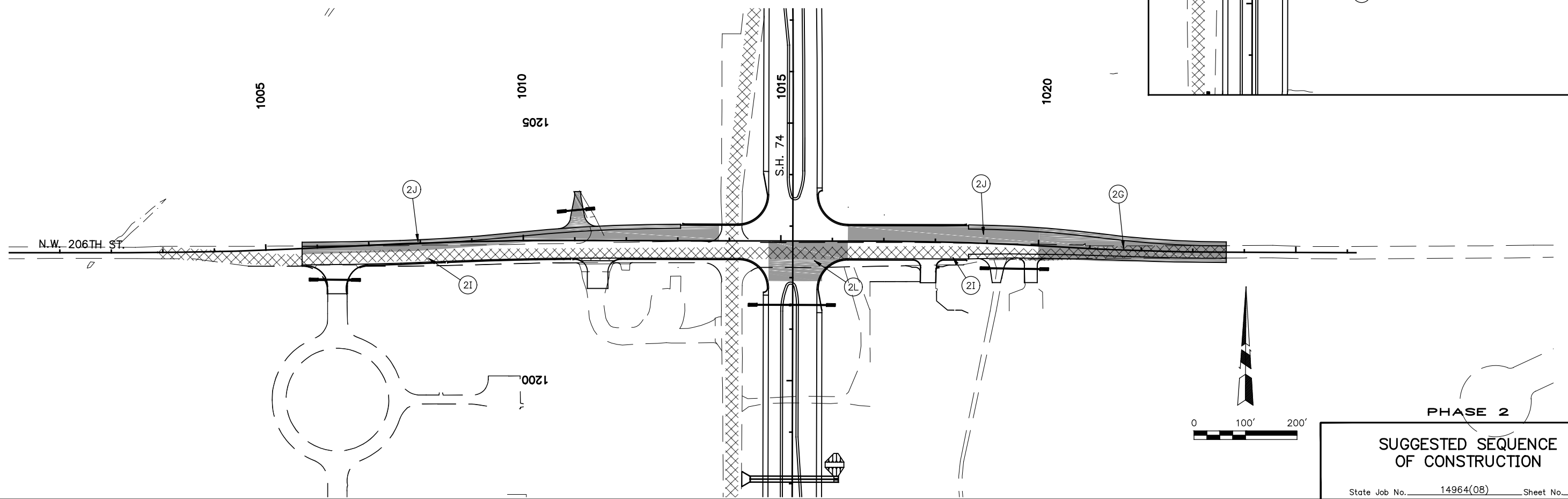
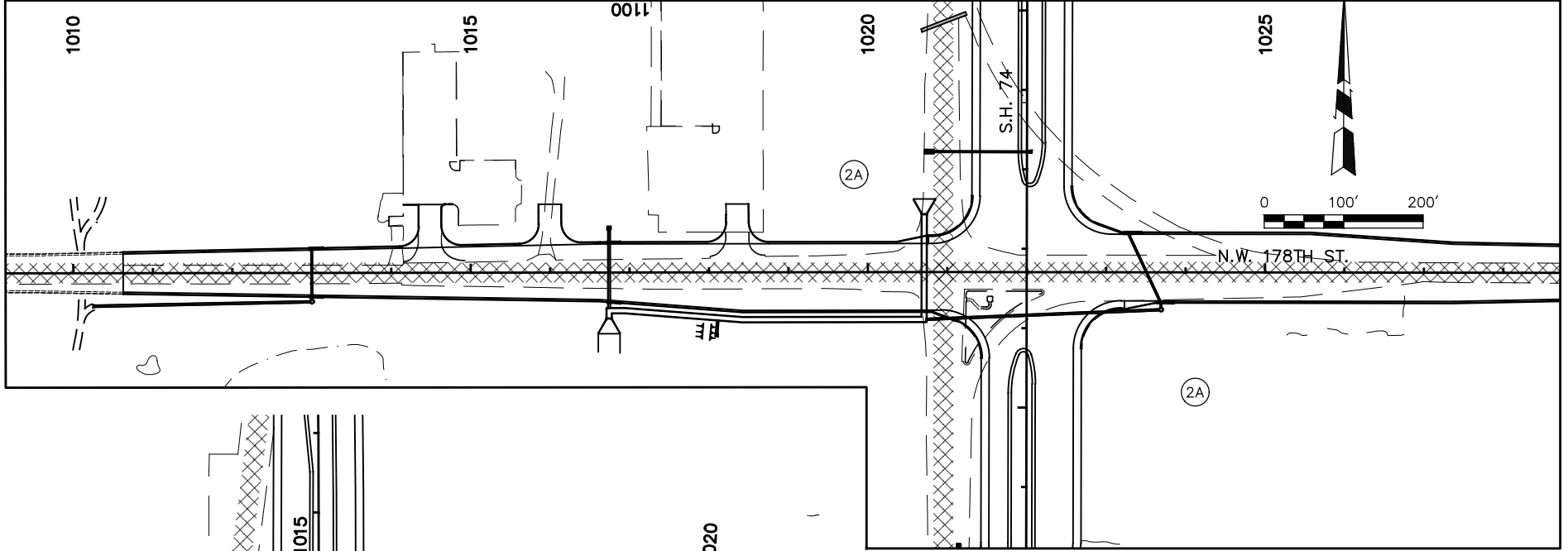
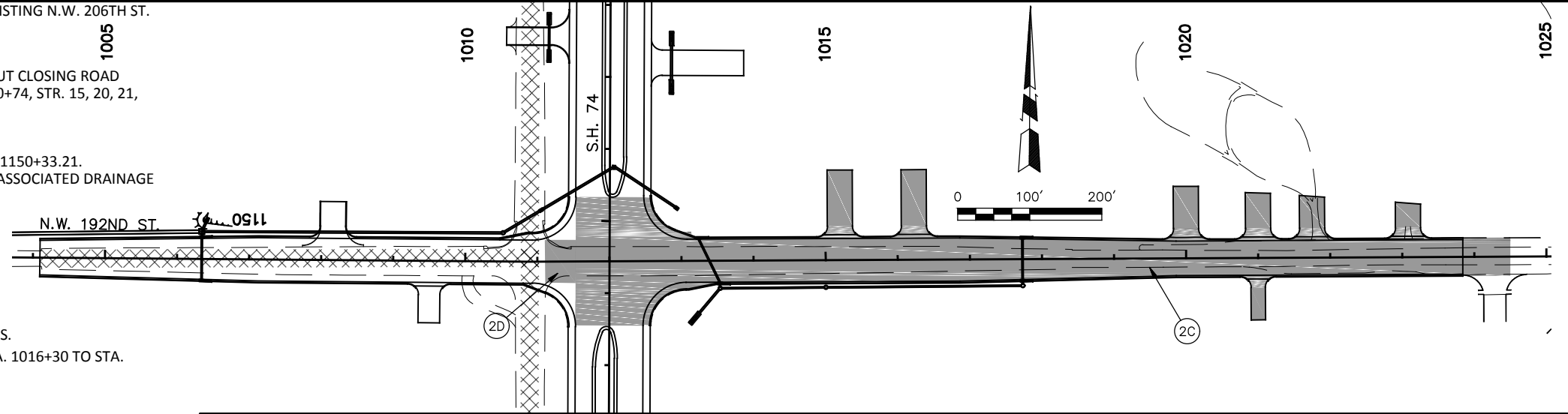


PHASE 2 TRAFFIC ON EXISTING S.H. 74, EXISTING N.W. 178TH ST., EXISTING N.W. 192ND ST., AND EXISTING N.W. 206TH ST.

- A ON N.W. 178TH STREET, CONSTRUCT AS MUCH OF THE STORM SEWER AS POSSIBLE WITHOUT CLOSING ROAD INCLUDING DRAINAGE STR. 11 WITH OUTLET RCP, STR. 16 FROM STA. 1016+78 TO STA. 1020+74, STR. 15, 20, 21, 22, 19 WITH RCP OUTLET.
- B CLOSE EAST HALF OF TRAFFIC ON N.W. 192ND ST.
- C CONSTRUCT THE S.H. 74 INTERSECTION AT N.W. 192ND ST. FROM STA. 1148+55.21 TO STA. 1150+33.21. CONSTRUCT EAST HALF OF N.W. 192ND ST. FROM STA. 1012+47 TO STA. 1024+50 AND ALL ASSOCIATED DRAINAGE STRUCTURES.
- D CONSTRUCT THE N.W. 192ND ST. TEMPORARY CONNECTION.
- E OPEN TRAFFIC ON N.W. 192ND ST.
- F CLOSE TRAFFIC ON N.W. 206TH ST. FROM STA. 1020+00 TO STA. 1024+00.
- G CONSTRUCT N.W. 206TH ST. FROM STA. 1020+00 TO STA. 1023+65.04.
- H OPEN TRAFFIC ON N.W. 206TH ST.
- I MOVE TRAFFIC TO EXISTING SOUTH EDGE OF N.W. 206TH STREET AND STRIPE FOR 2-3 LANES.
- J CONSTRUCT NORTH HALF OF N.W. 206TH STREET FROM 1005+70 TO STA. 1013+80 AND STA. 1016+30 TO STA. 1020+00 AND ALL ASSOCIATED DRAINAGE STRUCTURES.
- K CLOSE TRAFFIC ON N.W. 206TH ST. FROM STA. 1014+20 TO STA. 1017+60.
- L CONSTRUCT REMAINING S.H. 74 AT N.W. 206TH ST. INTERSECTION FROM STA. 1201+93.07 TO STA. 1202+71.
- M SHIFT S.H. 74 TRAFFIC ONTO S.H. 74 DETOUR AND EAST HALF OF PROPOSED S.H. 74. SHIFT TRAFFIC ON NORTH HALF OF PROPOSED N.W. 206TH ST. WITH TRAFFIC CLOSED FROM STA. 1012+10 TO STA. 1015+45.



PHASE 2

SUGGESTED SEQUENCE OF CONSTRUCTION

State Job No. 14964(08) Sheet No. 111

OKLAHOMA COUNTY S.H. 74